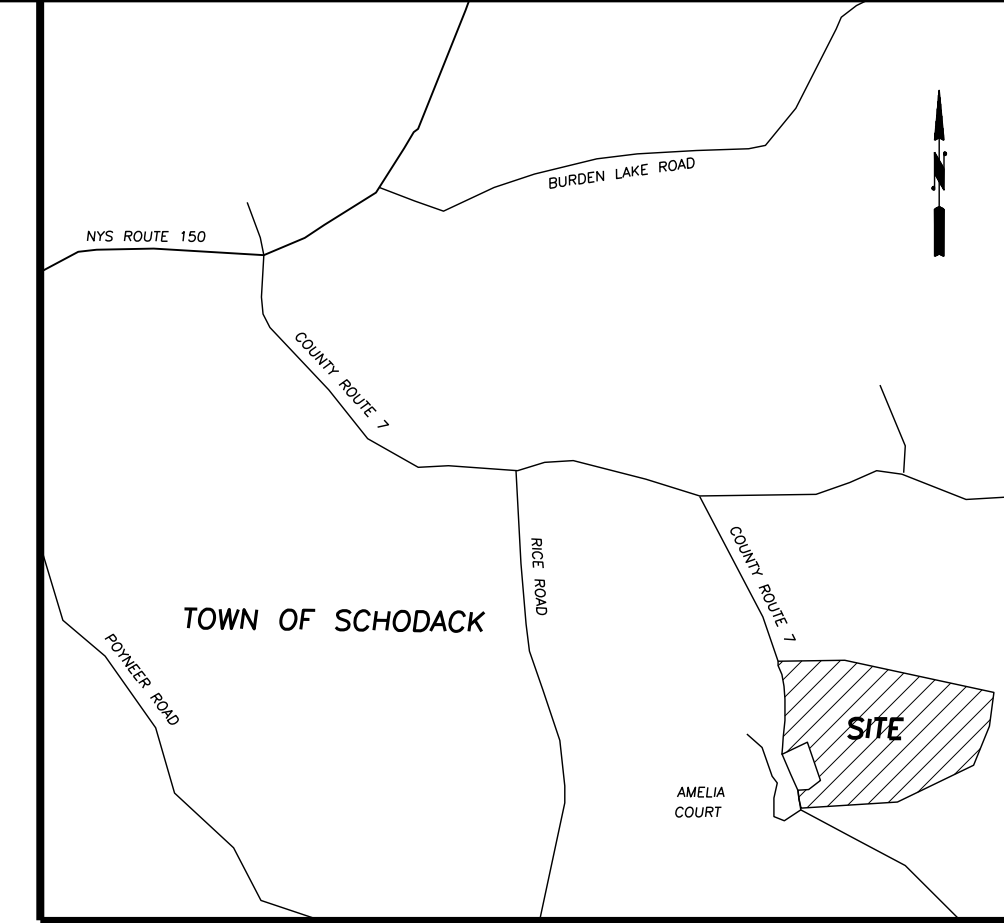
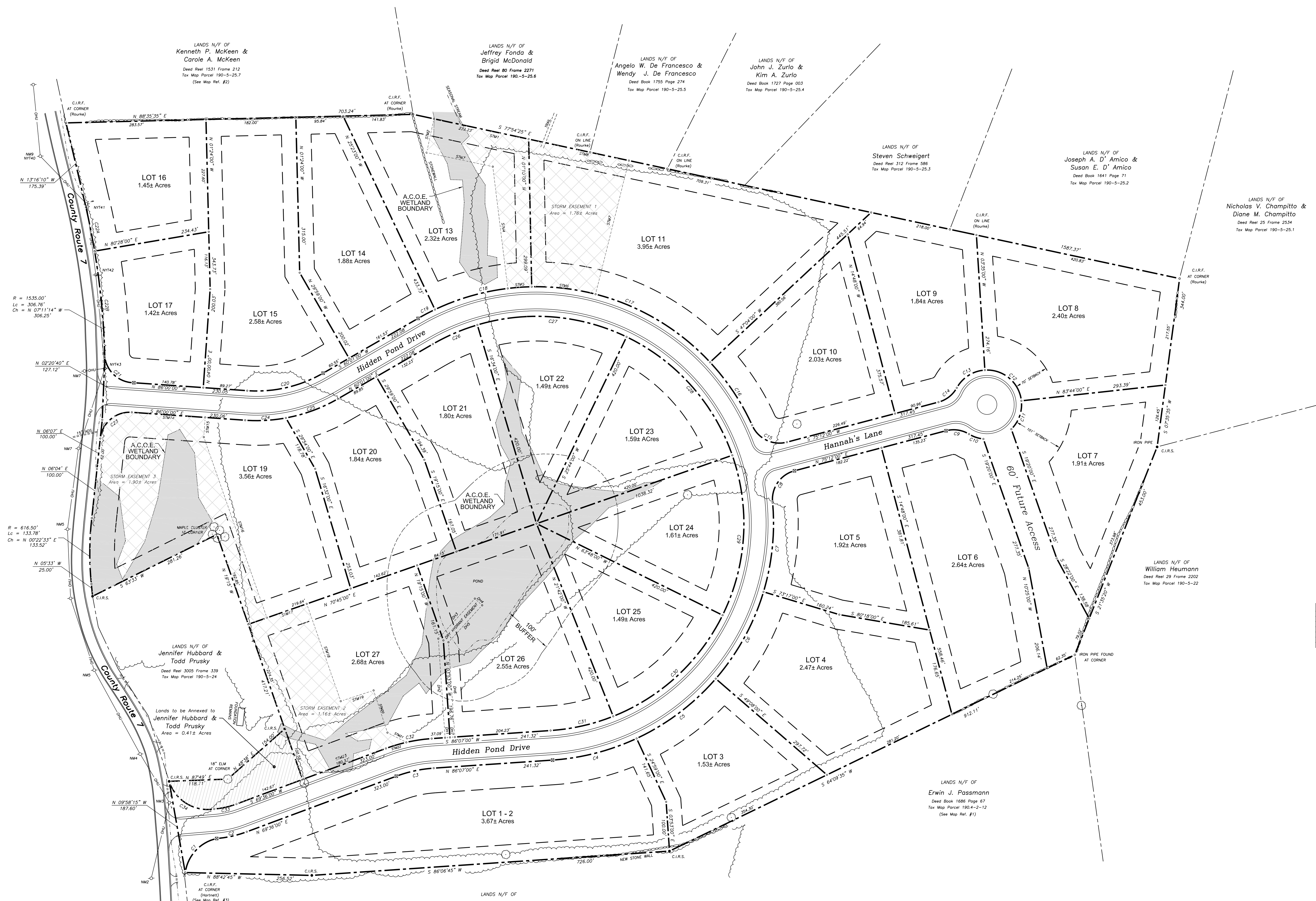


MAGNETIC NORTH - SEPTEMBER, 2006



SITE LOCATION - N.T.S.



CURVE TABLE			
CURVE	RADIUS	LENGTH	CHORD
C1	82.00'	100.02'	N 42°45'17" E - 93.93'
C2	230.00'	62.63'	N 77°24'30" E - 62.44'
C3	77.83'	77.83'	N 77°51'30" E - 77.56'
C4	480.00'	176.69'	N 75°34'02" E - 175.69'
C5	480.00'	202.39'	N 52°56'33" E - 200.90'
C6	480.00'	202.23'	N 28°47'36" E - 200.74'
C7	480.00'	182.52'	N 05°49'50" E - 181.42'
C8	60.00'	85.50'	N 34°22'29" E - 78.45'
C9	60.00'	48.37'	S 81°42'24" E - 47.07'
C10	70.00'	30.95'	S 71°16'47" E - 30.70'
C11	70.00'	63.01'	N 19°30'39" E - 60.91'
C12	70.00'	106.68'	N 49°56'19" W - 96.65'
C13	70.00'	70.11'	S 57°42'25" W - 67.22'
C14	60.00'	48.37'	S 52°06'23" W - 47.07'
C15	60.00'	85.50'	N 64°00'32" W - 78.45'
C16	480.00'	153.83'	N 33°44'22" W - 153.17'
C17	480.00'	404.21'	N 67°02'43" W - 392.38'
C18	480.00'	202.75'	S 76°43'46" W - 201.25'
C19	480.00'	38.60'	S 62°19'29" W - 38.59'
C20	270.00'	160.03'	S 77°00'30" W - 157.69'
C21	60.00'	85.52'	N 48°39'44" W - 78.47'
C22A	1535.00'	90.42'	S 11°13'30" E - 90.41'
C22B	1535.00'	216.34'	S 05°29'59" E - 216.16'
C23	60.00'	91.86'	N 50°18'06" E - 83.15'
C24	330.00'	82.79'	N 86°48'06" E - 82.57'
C25	330.00'	112.81'	N 69°49'17" E - 112.26'
C26	420.00'	98.32'	N 66°43'38" E - 98.09'
C27	420.00'	310.08'	S 85°25'00" E - 303.08'
C28	420.00'	329.99'	S 41°45'30" E - 321.57'
C29	420.00'	333.17'	S 03°28'30" W - 324.50'
C30	420.00'	308.61'	S 47°15'00" W - 301.71'
C31	420.00'	130.57'	S 77°12'22" W - 130.05'
C32	330.00'	95.12'	S 77°51'30" W - 94.79'
C33	170.00'	46.29'	S 77°24'30" W - 46.14'
C34	82.00'	116.65'	N 58°27'31" W - 107.06'

DRY HYDRANT EASEMENT			STORM EASEMENT 1			STORM EASEMENT 2 & 3		
Course	Bearing	Distance	Course	Bearing	Distance	Course	Bearing	Distance
DH1	S 86°07'00" W	10.00'	SE1	S 77°54'23" E	198.35'	SE1	S 86°00'00" E	148.90'
DH2	N 03°53'00" W	201.03'	SE2	S 12°00'00" W	70.00'	SE2	S 04°00'00" W	39.97'
DH3	N 42°22'00" E	109.99'	SE3	S 28°00'00" E	136.93'	SE3	S 17°15'00" E	89.61'
DH4	S 47°50'00" E	20.00'	SE4	S 07°00'00" E	248.52'	SE4	N 70°45'00" E	85.42'
DH5	S 42°29'00" W	107.23'	SE5	W = 480.00'	LC = 48.58'	SE5	N 71°15'00" E	208.76'
DH6	S 03°53'00" E	192.49'	SE6	W = 480.00'	LC = 48.58'	SE6	N 81°15'00" E	69.69'
DH7	S 86°07'00" W	10.00'	SE7	W = 480.00'	LC = 48.58'	SE7	S 88°00'00" E	90.00'
			SE8	S 83°07'11" E	150.28'	SE8	S 64°45'00" E	43.00'
			SE9	N 14°00'00" E	278.87'	SE9	N = 130.00'	LC = 43.12'
			SE10	N 77°24'30" W	207.57'	SE10	S = 27°00'11" W	43.09'
			SE11	S 69°36'00" W	180.63'			

SITE DATA
 AREA OF SITE - 59 ± ACRES
 EXISTING ZONING - RA
 NUMBER OF LOTS - 25
 SEWER SERVICE - INDIVIDUAL SEPTIC SYSTEMS
 WATER SERVICE - INDIVIDUAL WELLS
 TOTAL LINEAR FEET OF ROAD: 3,850.4'
 TOTAL ACCE WETLAND SIZE: 2.8 ± ACRES

LOT REQUIREMENTS
 MINIMUM SIZE 60,000 SF
 MINIMUM LOT WIDTH 200 FT. @ FRONT SETBACK
 MINIMUM LOT DEPTH 200 FT.
 FRONT YARD SETBACK 50 FT.
 SIDE YARD SETBACK 30 FT.
 REAR YARD SETBACK 35 FT.

NOTE: THERE IS NO LOT 12 OR LOT 18

Total Area = 59.04 ± Acres

Hidden Pond Subdivision

Lands N/F of
Donmar Development Corp.

TOWN OF SCHODACK, RENSSELAER COUNTY, NEW YORK

SCALE: 1" = 100'	TAX MAP PARCEL 190-5-23
NOVEMBER 8, 2007	MAP NO. 2006178A

- LEGEND**
- EDGE OF WATER
 - FENCE
 - IRON PIPE FOUND
 - PROPERTY CORNER
 - CAPRED IRON ROD SET (CIRS)
 - ROAD SIGN
 - UTILITY POLE
 - OVERHEAD UTILITIES
 - PROPERTY LINE
 - GUY WIRE
 - PROPOSED CONC. MONUMENT

- MAP REFERENCES**
- "MAP SHOWING SURVEY OF PORTION OF LANDS OF VERA MORRIS TO BE CONVEYED TO SCHODACK PROPERTIES & LEASING, INC.", PREPARED BY HERSHBERG & HERSHBERG, DATED AUGUST 27, 1987 AND PROVIDED BY HERSHBERG & HERSHBERG AS COURTESY
 - "HYDOR HILLS", PREPARED BY BREWER ENGINEERING ASSOCIATES, PC - BOT ASSOCIATES, DATED APRIL 13, 1989, LAST REVISED SEPTEMBER 18, 1989 AND FILED IN THE RENSSELAER COUNTY CLERK'S OFFICE IN DRAWER 1990 AS MAP 19.
 - "PROPOSED ACQUISITION BY RENSSELAER COUNTY, LANDS OF VERA MORRIS (REPUTED OWNER)", PREPARED BY CHARLES E. HARTNETT HAROLD A. BEHRENS, DATED OCTOBER 10, 1980, LAST REVISED OCTOBER 23, 1980 AND FILED IN THE RENSSELAER COUNTY CLERK'S OFFICE IN DRAWER 1983 AS MAP 146.
 - RENSSELAER COUNTY TAX MAP SECTION 190.

- DEED REFERENCES**
- SIDNEY CHAVIN AND ESTELLE CHAVIN TO DONMAR DEVELOPMENT CORP., DATED JANUARY 9, 2008 AND FILED IN THE RENSSELAER COUNTY CLERK'S OFFICE ON REEL 4476 OF DEEDS AT FRAME 145.

- NOTES**
- SUBJECT TO ANY EASEMENTS AND/OR UNDERGROUND UTILITIES OF RECORD.
 - THIS SURVEY WAS DONE WITHOUT THE BENEFIT OF AN ABSTRACT OF TITLE.
 - ELEVATION DATUM NAVD 88 OBTAINED FROM GPS OBSERVATIONS COLLECTED ON SEPTEMBER 22, 2006 USING "M21307".
 - ARMY CORPS WETLANDS DELINEATED IN MAY 2007 BY KURT WEISSKOTTEN, WETLAND BIOLOGIST.

9/17/08	GENERAL REVISIONS
4/3/08	ADD DRY HYDRANT EASEMENT & REVISE STORM EASEMENT #4
3/20/08	ELIMINATE STORM EASEMENT #2
1/7/07	REVISE 60' FUTURE ACCESS & ADD PROPOSED MONUMENT LOCATIONS
11/28/07	COMBINE LOTS 1 & 2
DATE	REVISIONS

HAROLD BERGER, P.E. #50,220
 BRIAN R. HOLBRITTER P.L.S. #50,326

BRIAN R. HOLBRITTER

 LAND SURVEYING & SITE DEVELOPMENT
 34 CENTER STREET ROAD
 SCHAGHTICOKE, NY 12154
 PHONE: 518-753-7592